

# VTK Best ESG Integration AI Management System

# Energy Saving



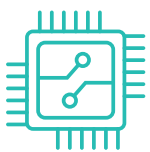
# VTK Energy Saving

Vecow ESG-focused Energy-Saving Turnkey Solution, crafted to tackle sustainability challenges across various industries. In offices, factories, charging stations, cold chains, and etc., we tackle energy management inefficiencies, human error, and equipment reliability issues. Our approach integrates cutting-edge technological solutions such as automation and smart systems to optimize operations, reduce waste, and enhance efficiency. By implementing our solution, businesses can mitigate environmental impact, improve social responsibility, and achieve better governance practices. Whether it's reducing energy waste in offices, streamlining production processes in factories, optimizing charging procedures at stations, or ensuring food safety in cold chains, our turnkey solution delivers comprehensive sustainability benefits.



## Ready to use Edge AI Solution

VTK is a turn-key solution product that enables AI applications at the edge, such as traffic vision, surveillance, and factory automation. It enables real-time AI inferencing including video analytics, object recognition, and data processing, empowering businesses to make informed decisions swiftly with precision.



### Industrial Grade Comprehensive

Enhanced reliability, durability, and performance providing long-lasting value to businesses.



### Hardware Ecosystem

Diverse of hardware and software combinations suitable for all application scenarios.



### Easy Deployment

Ready to use system integrated AI platforms with pre-trained models and tools.



### Enterprise Reliability

User friendly, seamless and dependable operations for your business.

# Product Specification

For Standard VTK Energy Saving, We provide...



## Energy Manage Center



- Energy Status : Power consumption, carbon emission, and abnormal alarm
- Real-time Dashboard : Graphical interface, easy to understand and operate.
- Remote Monitoring : User management for comprehensive device oversight and detailed status viewing.
- Group Control : Simultaneously manage multiple devices (on/off).
- Timing Function : Schedule device activation at specific times.

## ECS-4700-PoER

- High-Performance Fanless System
- Intel® Core™ i7-1365UE, 16GB DDR5 SODIMM
- 2 2.5GigE LAN, 4 PoE+ LAN, 4 USB Type-A
- Fanless -25°C to 75°C Operating Temperature
- Window 11/10



## Multiple Optional Edge Devices

### Gateway System

Thread Wireless Technology supports 100M coverage for data collection



### IP Camera

IP Camera (max. 5MP resolution) for remote monitoring of spaces.



### Control Switch

Achieving Site-wide Automation (Lighting, Power, Air-con, etc.)



### Temperature Sensor

-20°C to 80°C supported, ensuring stable environmental conditions.



### Smart Meter

Non-intrusive! No Additional Wiring Needed. DIN type and Clamp type.



### Tower Beacon

Three-color tower beacon alarm can respond immediately to various events.



We support custom hardware configuration and AI applications, please contact Vecow at [sales@vecow.com](mailto:sales@vecow.com) for more detail.